



Maastricht University

*Leading
in Learning!*

The neurobiology of somatoform disorders

Blazej M. Baczkowski

6.02.2015, Maastricht

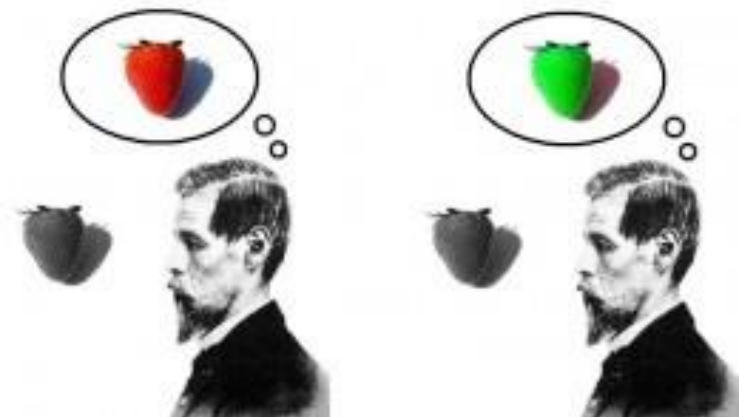
Somatoform disorders

- **mental** illnesses that cause **bodily** symptoms (e.g. pain)
- the symptoms cannot be traced back to any physical cause...
- ...and they are not the result of substance abuse or another mental illness.

The somatic problems are experienced as **real!!!**

Mind-body problem

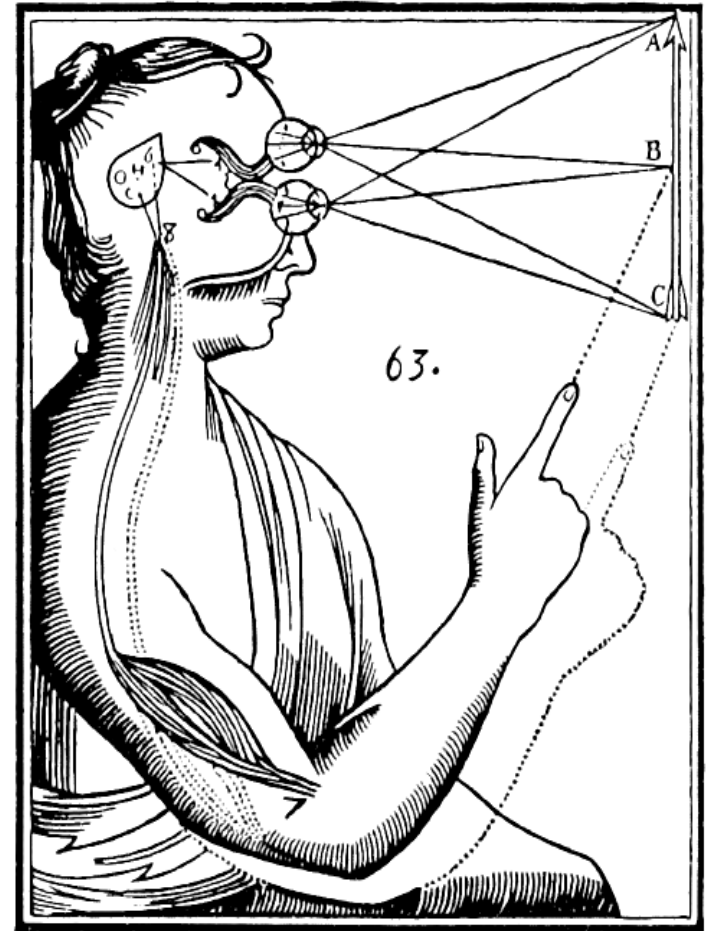
- The mind–body problem in philosophy examines the relationship between mind and matter.
- What is the nature of the mind?
- What is the nature of the brain?



Mental causation (I)

– how an *immaterial* mind can be the cause of a *physical* action?

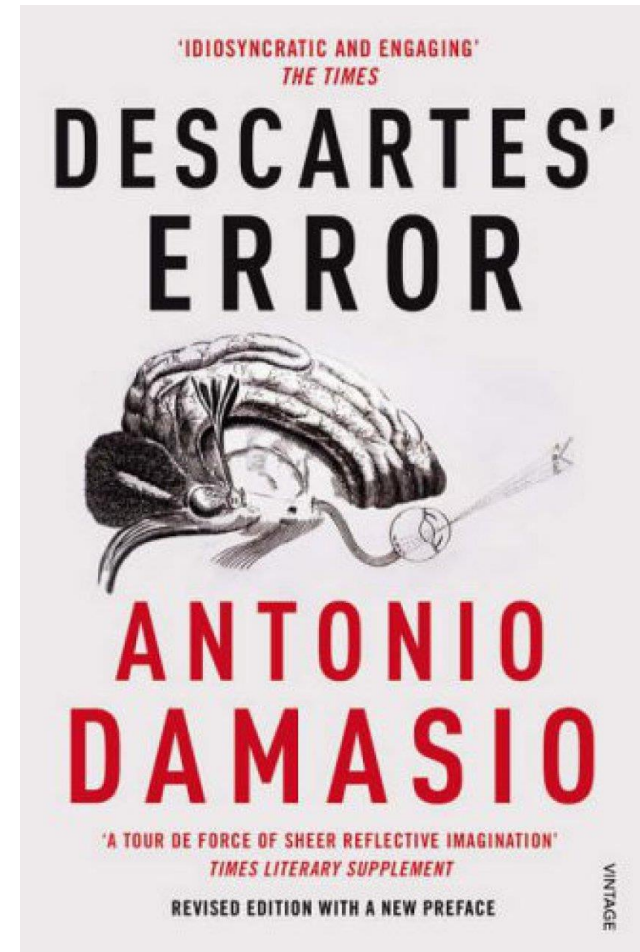
- **Cartesian dualism** – René Descartes (1596-1650) proposed that the mind and body are not identical.
- He held that *mind* was distinct from *matter*, but could influence matter.
- Pineal gland as the point of contact between mind and body.



Mental causation (II)

– how the physical can influence the state of the mind?

- **Somatic marker hypothesis**
proposed by a neurologist Antonio Damasio (1944-) posits that a physiological affective state guides human behaviour in terms of decision making and rationality.
- rationality stems from emotion, and emotion stems from bodily senses
- *'the mind is embodied, in the full sense of the term, not just embrained'*



Somatoform disorders & mind-body problem

We assume:

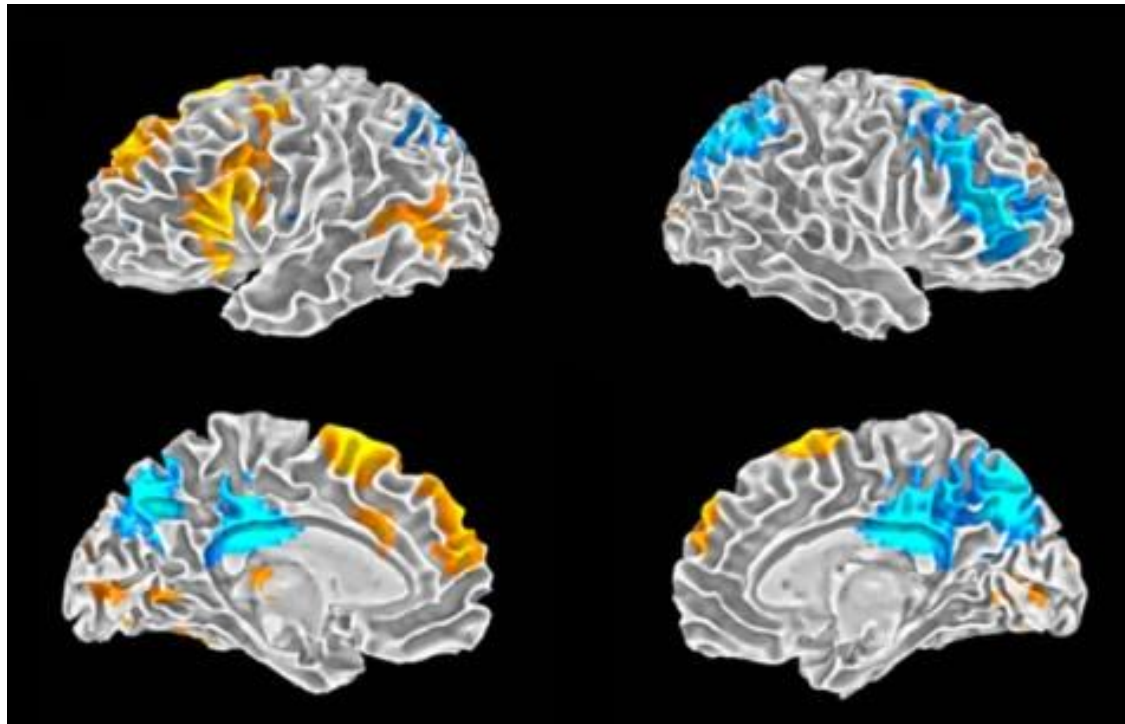
- a) any psychological process is biological
- b) any biological process is experienced by a person subjectively, with or without that person's conscious awareness, and can be influenced by this subjective experience (Landa et al., 2012).



Neural correlates

– the wave of brain imaging

- What is a neurobiological correlate of mental illness?



BOLD (blood oxygen-level dependent) signal

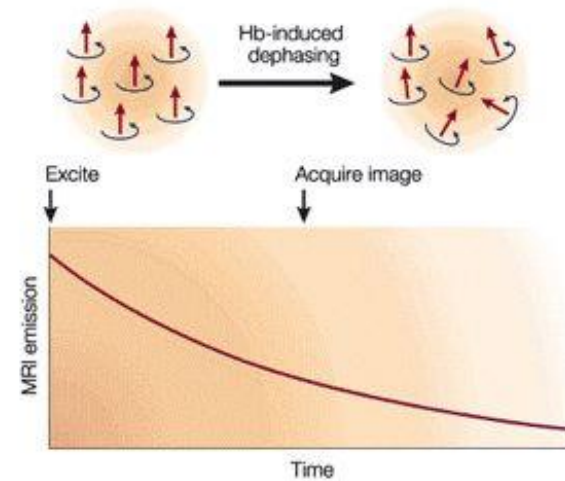
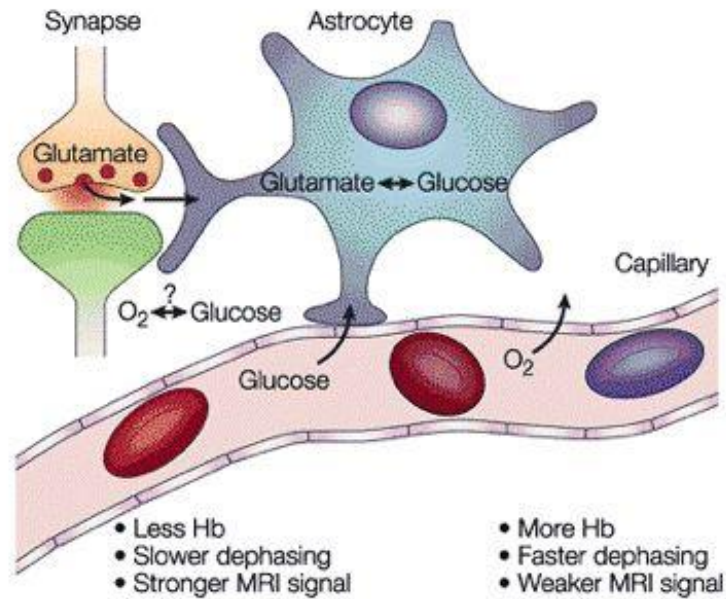
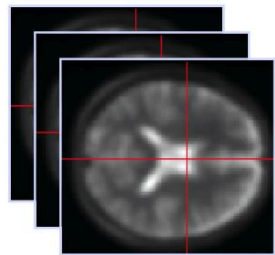
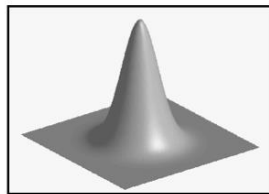


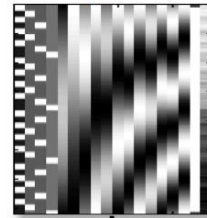
Image time-series



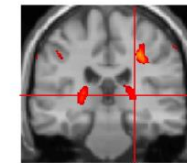
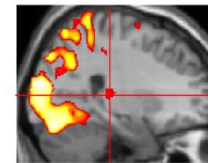
Spatial filter



Design matrix



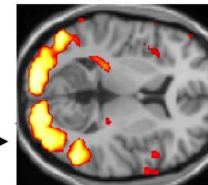
Statistical Parametric Map



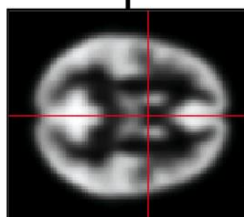
Realignment

Smoothing

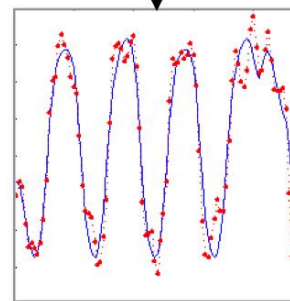
General Linear Model



Normalisation



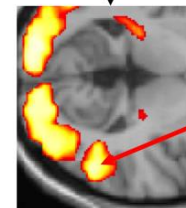
Anatomical
reference



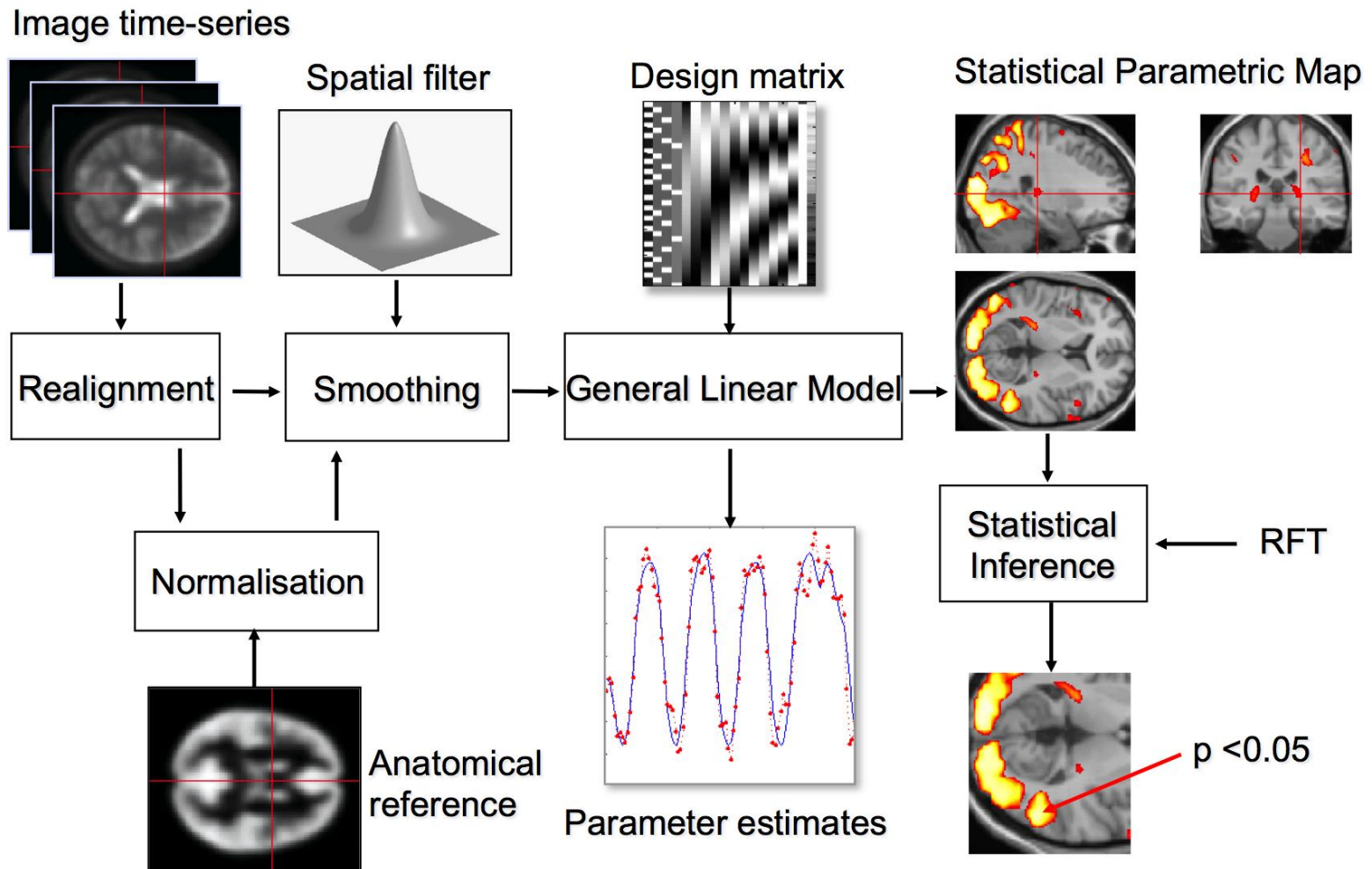
Parameter estimates

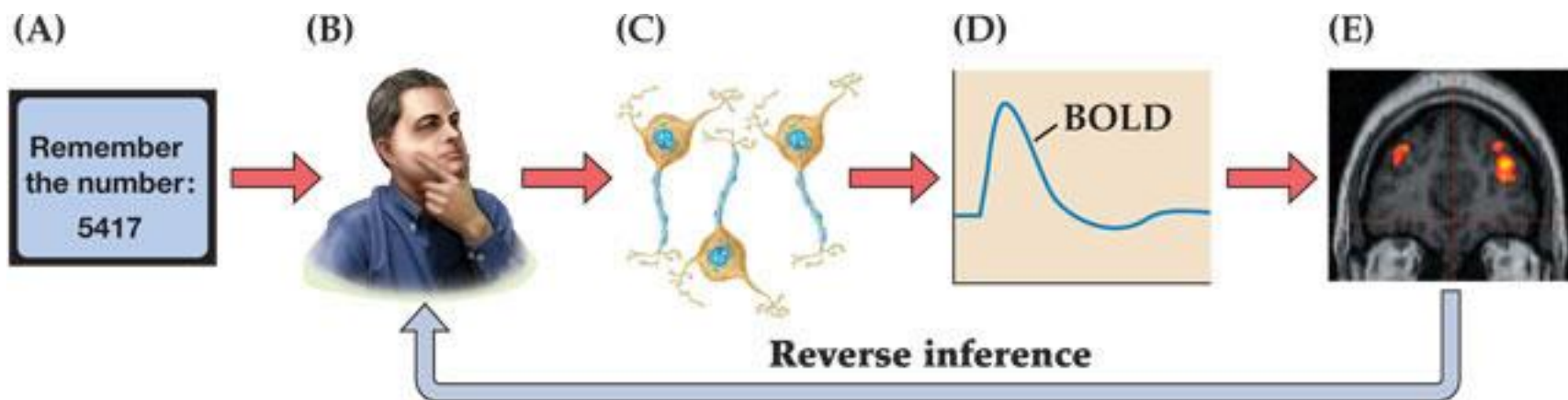
Statistical
Inference

RFT



$p < 0.05$





Reverse inference

"Drawing conclusions about cognitive processes from the presence of activation."

Neuroimaging of somatoform disorders

- Is there evidence of altered neural function or structure that is specifically associated with somatoform disorders?
- What conclusions can we draw from these findings about the etiology of somatoform disorders?
- The goal is to provide a basis for a pure and empirically driven classification of the somatoform disorders (Browning et al., 2011).

Conversion

- Conversion disorder is a condition in which patients present neurological symptoms of psychological origin which affect voluntary motor or sensory function.
- S. Freud: affective energy is 'converted' into physical symptoms.
- DSM 5 categorizes conversion disorder under the somatoform disorders while ICD 10 classifies it as a dissociative disorder.



Contents lists available at [ScienceDirect](#)

NeuroImage: Clinical

journal homepage: www.elsevier.com/locate/ynicl

Functional neuroimaging of conversion disorder: The role of ancillary activation

Matthew J. Burke MD^{a,*}, Omar Ghaffar MD, MSc^{b,c,*}, W. Richard Staines PhD^{d,*},
Jonathan Downar MD, PhD^{b,e,*}, Anthony Feinstein MD, MPhil, PhD^{b,c}

^aDepartment of Neurology, University of Toronto, Toronto, Ontario M4N 3M5, Canada

^bDepartment of Psychiatry, University of Toronto, Toronto, Ontario M4N 3M5, Canada

^cSunnybrook Health Sciences Centre, 2075 Bayview Avenue, Room FG16, Toronto, Ontario M4N 3M5, Canada

^dDepartment of Kinesiology, University of Waterloo, 200 University Avenue West, Waterloo, Ontario N2L 3G1, Canada

^eToronto Western Hospital, 399 Bathurst Street, Room 7M-415, Toronto, Ontario M5T 2S8, Canada

Method

- 10 subjects with sensory conversion (anesthesia – sensory loss)
- Block design with unilateral vibrotactile stimulation applied to either the symptomatic limb or the asymptomatic limb.

Results

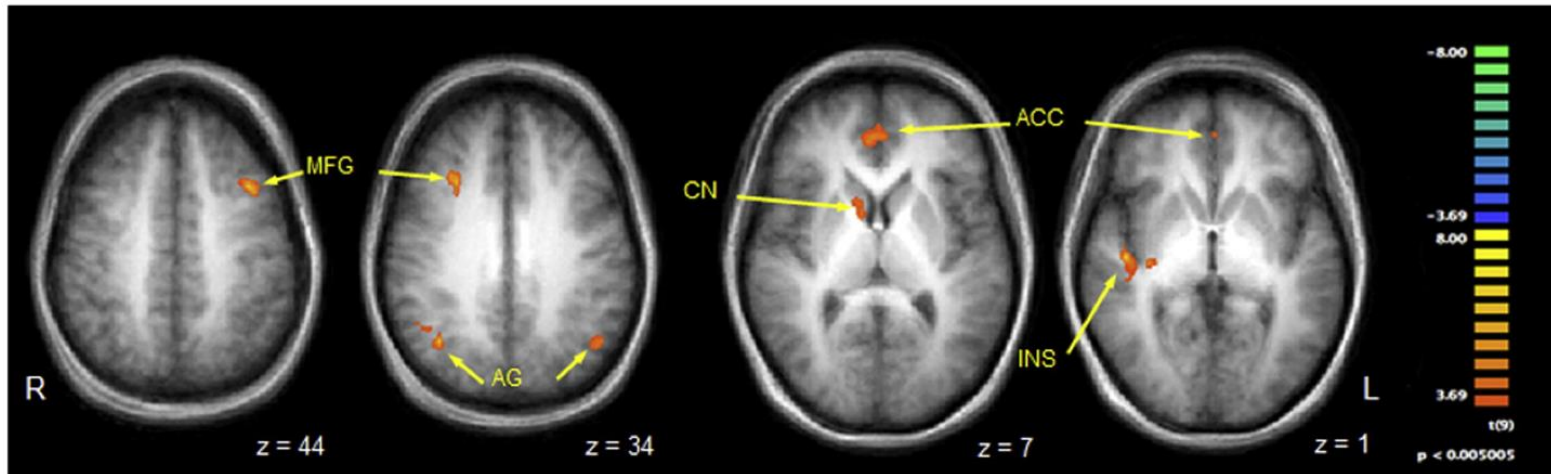


Fig. 1. Contrast map of selected regions of BOLD activation that were significantly more active when vibrotactile stimuli were delivered to the symptomatic body part compared to the asymptomatic mirror region. Legend: anatomical images are derived from averages of T1-weighted scans from all participants and have been AC-PC aligned and transformed to Talairach space. MFG = middle frontal gyrus; AG = angular gyrus; CN = caudate nucleus; ACC = anterior cingulate cortex; INS = insula. See Table 1 for full list of activated regions. Per voxel cutoff of $p < 0.005$.

These findings of activation were present in the context of a trend towards decreased activation of the contralateral somatosensory cortex.

Conclusions

- Studies of sensory conversion disorder have reported a pattern of suppression of sensory cortical function coupled with concomitant increased activity in ancillary brain regions implicated in emotional processing.
- This conclusion supports a theory of suppression of the somatosensory system by emotion-based processing (psychological mechanism).
- Studies investigating isolated motor conversion weakness without sensory symptoms do not always follow this pattern of brain activation.
- **General note:** It remains unclear which findings represent signal and which represent noise (Browning et al., 2011).

Somatization

- A disorder characterized by multiple physical complaints which do not have a medical explanation.
- Somatoform pain disorder is characterized by augmented central pain (Giesecke et al., 2004).
- Disturbances in stress regulation acquired from childhood adversities may be responsible for the onset and the course of the illness (Landa et al., 2012)



Cerebral activation in patients with somatoform pain disorder exposed to pain and stress: An fMRI study

P. Stoeter,^{a,*} Th. Bauermann,^a R. Nickel,^b L. Corluka,^c J. Gawehn,^a G. Vucurevic,^a
G. Vossel,^c and U.T. Egle^b

^a*Institute of Neuroradiology, University Clinic Mainz, Langenbeckstr. 1, D-55101 Mainz, Germany*

^b*Hospital for Psychosomatic Medicine Klinik Kinzigtal, Gengenbach, Germany*

^c*Department of Psychology, Johannes Gutenberg University Mainz, Mainz, Germany*

Received 2 August 2006; revised 25 January 2007; accepted 25 January 2007

Available online 27 February 2007

Findings

(Stoeter et al., 2007)

- Seventeen patients with somatoform pain disorders
- Pin-prick pain, cognitive stress (a logical task under time pressure), emotional stress (pictures and audio scenes of physical violence).
- The patients demonstrated increased activation of pain-processing areas (thalamus, basal ganglia, and operculo-insular cortex) during first pain exposure, and increased activation of some prefrontal, temporal, and parietal regions was also observed.
- Temporal and parietal areas were also activated during cognitive stress, and activation was reduced during emotional stress.

Is altered pain-related brain activation in patients with somatoform pain disorder modulated by emotional dysregulation?

NeuroImage: Clinical 2 (2013) 782–789



Contents lists available at [ScienceDirect](#)

NeuroImage: Clinical

journal homepage: www.elsevier.com/locate/ynicl



Distinctive neural responses to pain stimuli during induced sadness in patients with somatoform pain disorder: An fMRI study[☆]



Atsuo Yoshino^{a,*}, Yasumasa Okamoto^a, Shinpei Yoshimura^a, Kazuhiro Shishida^a, Shigeru Toki^a, Mitsuru Doi^b, Akihiko Machino^a, Takuji Fukumoto^a, Hidehisa Yamashita^a, Shigeto Yamawaki^a

^a Department of Psychiatry and Neurosciences, Division of Frontier Graduate School of Biomedical Sciences, Hiroshima University, 1-2-3 Kasumi, Minami-ku, Hiroshima 734-8551, Japan

^b Department of Dental Anesthesiology, Hiroshima University, 1-2-3 Kasumi, Minami-ku, Hiroshima 734-8551, Japan

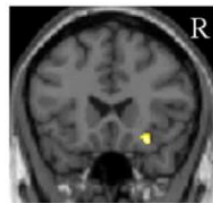
Method

- Eleven patients with somatoform pain disorder
- 2 x 2 block design: pain stimulation (moderate or low) & emotional context (sad or neutral)

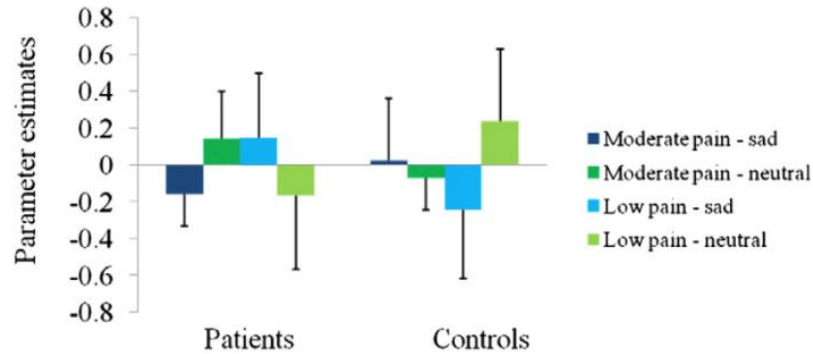
Results

A. Yoshino et al. / *NeuroImage: Clinical* 2 (2013) 782–789

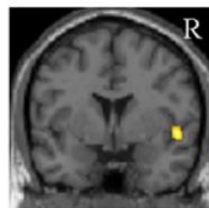
(A) Anterior insula
[28, 22, -16]



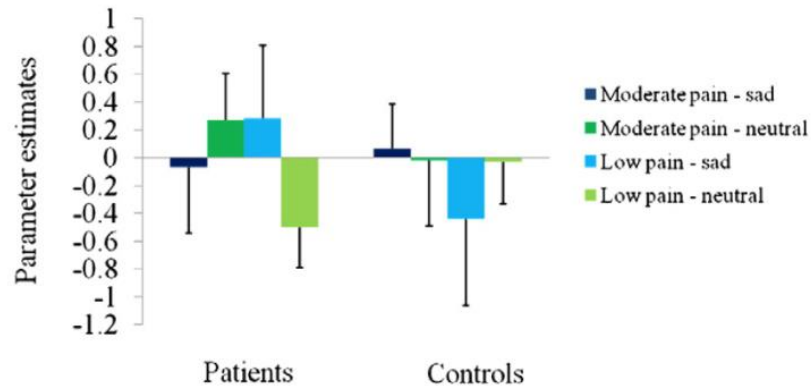
y=22



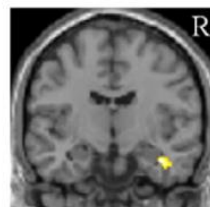
(B) Posterior insula
[50, 2, -4]



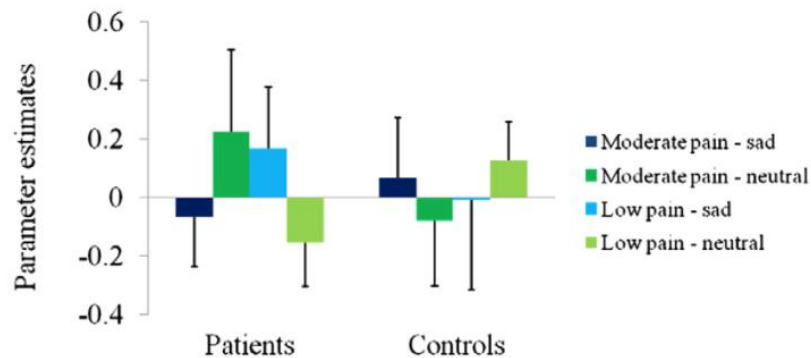
y=2



(C) Hippocampus
[38, -10, -24]



y=-10



Conclusions

(Yoshino et al., 2013)

- Activation of the anterior/posterior insula during low-pain stimuli in a sad emotional context was stronger in somatoform pain disorder patients than in controls.
- Stronger hippocampus activation in patients for low pain stimuli in a sad emotional context.
- Patients tend to show slightly higher pain sensitivities to low pain stimuli in context of sadness.

Landa et al., 2012

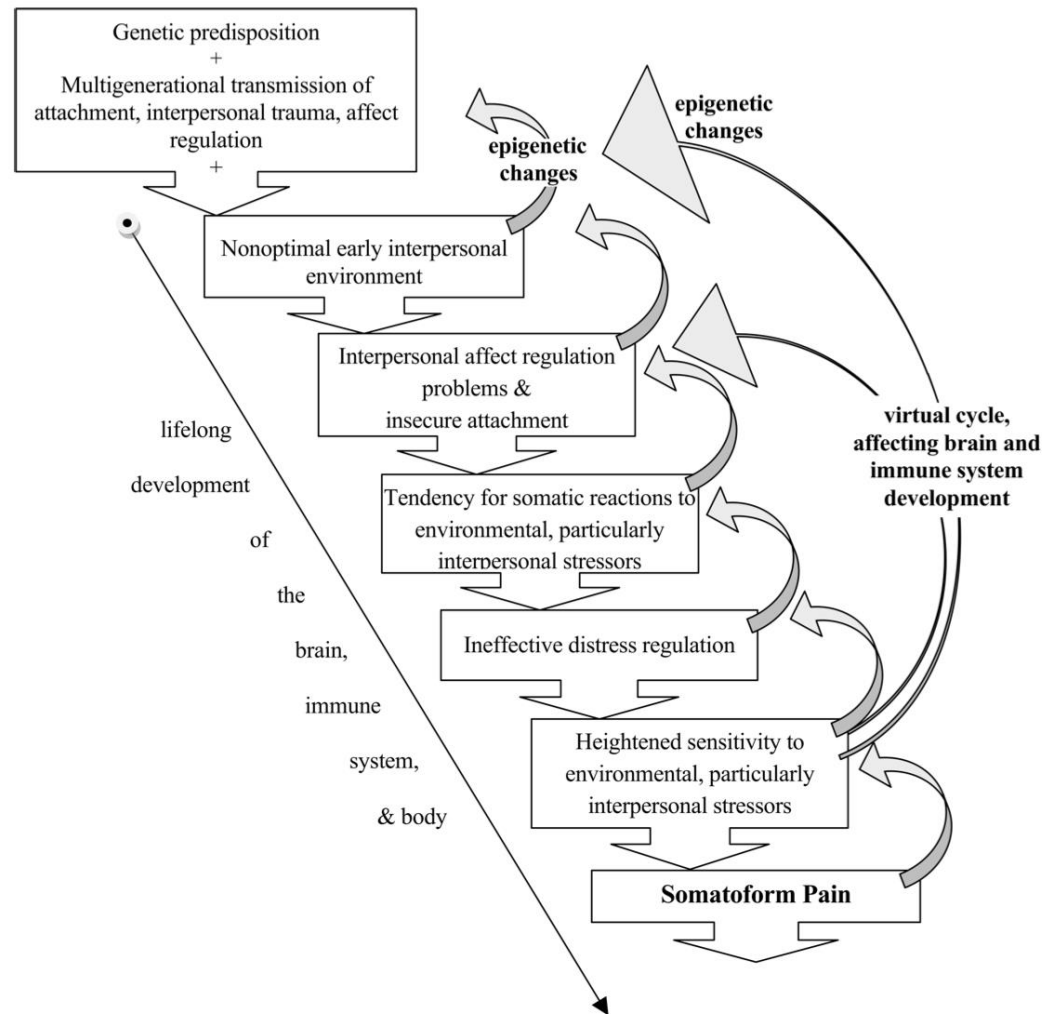


Figure 1. Developmental theory of somatoform pain.

Chronic fatigue syndrom (CFS)

- Complex and medically unexplained illness that is characterized by severe and prolonged disabling fatigue and a combination of symptoms including, e.g., sleep disturbance and impairment in concentration and short term memory (Fukuda et al., 1994).



ELSEVIER

Functional neuroimaging correlates of mental fatigue induced by cognition among chronic fatigue syndrome patients and controls

Dane B. Cook,^{a,b,*} Patrick J. O'Connor,^c Gudrun Lange,^{d,e} and Jason Steffener^f

^a*Department of Veterans Affairs-William S. Middleton Memorial Veterans Hospital, Madison, WI 53706, USA*

^b*Department of Kinesiology, University of Wisconsin, Madison, WI 53706, USA*

^c*Department of Kinesiology, University of Georgia, Athens, GA 30602, USA*

^d*Department of Veterans Affairs-New Jersey Health Care System, East Orange, NJ 07018, USA*

^e*Department of Radiology, University of Medicine and Dentistry of New Jersey Medical School, Newark, NJ 07103, USA*

^f*Cognitive Neuroscience Division of the Taub Institute for Research on Alzheimer's Disease and the Aging Brain, Columbia University, New York, NY 10032, USA*

The aim was to determine the association between feelings of mental fatigue and brain responses during a mentally fatiguing cognitive task.

Method

- Nine patients diagnosed with CFS
- A difficult cognitive task (attention, WM, EF), a less demanding cognitive task (number recognition), finger tapping.

Results

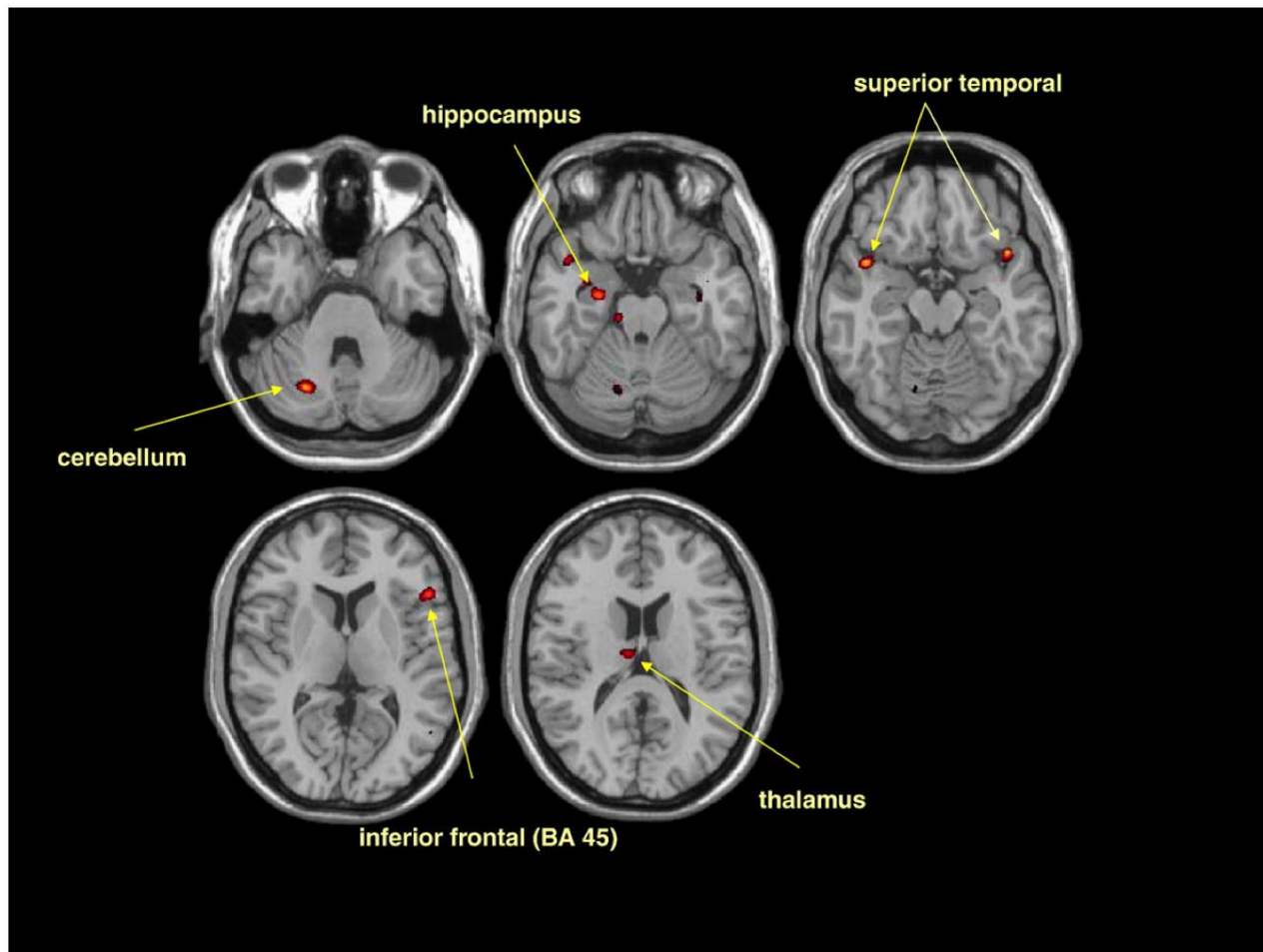


Fig. 6. Brain regions that demonstrated significantly more BOLD activity in the fatigued ($n=9$) versus non-fatigued ($n=10$) participants during the PASAT task.

Conclusions

- The CFS and control groups did not differ in brain activity during the finger tapping or auditory monitoring tasks.
- Brain regions that were significantly related to mental fatigue have been demonstrated as important for several aspects of cognitive function, including those that involve the working memory network.
 - Increased activation may represent the adjustments necessary to maintain task performance.
- The results show that feelings of fatigue can reflect brain activity in both healthy and chronically fatigued individuals:
 - the ratings of mental fatigue eliminated group differences in brain activity when entered into the analysis

Behavioral and Brain Functions



Review

Open Access

Can sustained arousal explain the Chronic Fatigue Syndrome?

Vegard B Wyller*¹, Hege R Eriksen^{2,3} and Kirsti Malterud⁴

Address: ¹Division of Paediatrics, Rikshospitalet University Hospital, Oslo, Norway, ²Department of Education and Health Promotion, University of Bergen, Bergen, Norway, ³Unifob Health Bergen, Bergen, Norway and ⁴Research Unit for General Practice, Unifob Health Bergen, Bergen, Norway

Email: Vegard B Wyller* - brwyll@online.no; Hege R Eriksen - hege.eriksen@unifob.uib.no; Kirsti Malterud - kirsti.malterud@isf.uib.no

* Corresponding author

Table 1: Summary of main findings related to disease mechanisms in Chronic Fatigue Syndrome

Predisposing factors
Genetic traits
Polymorphisms in autonomic and endocrine effector systems
Personality traits
Inappropriate illness perceptions
Precipitating factors
Long-lasting infections
Critical life events
Perceived chronic difficulties
Perpetuating and associated factors
Hemodynamic alterations
Sympathetic vs parasympathetic predominance
Immune alterations
Th2 vs Th1 predominance
Endocrine alterations
Attenuated HPA axis
Skeletal muscle alterations
Attenuated cortical activation
Increased oxidative stress
Cognitive alterations
Impaired memory and information processing

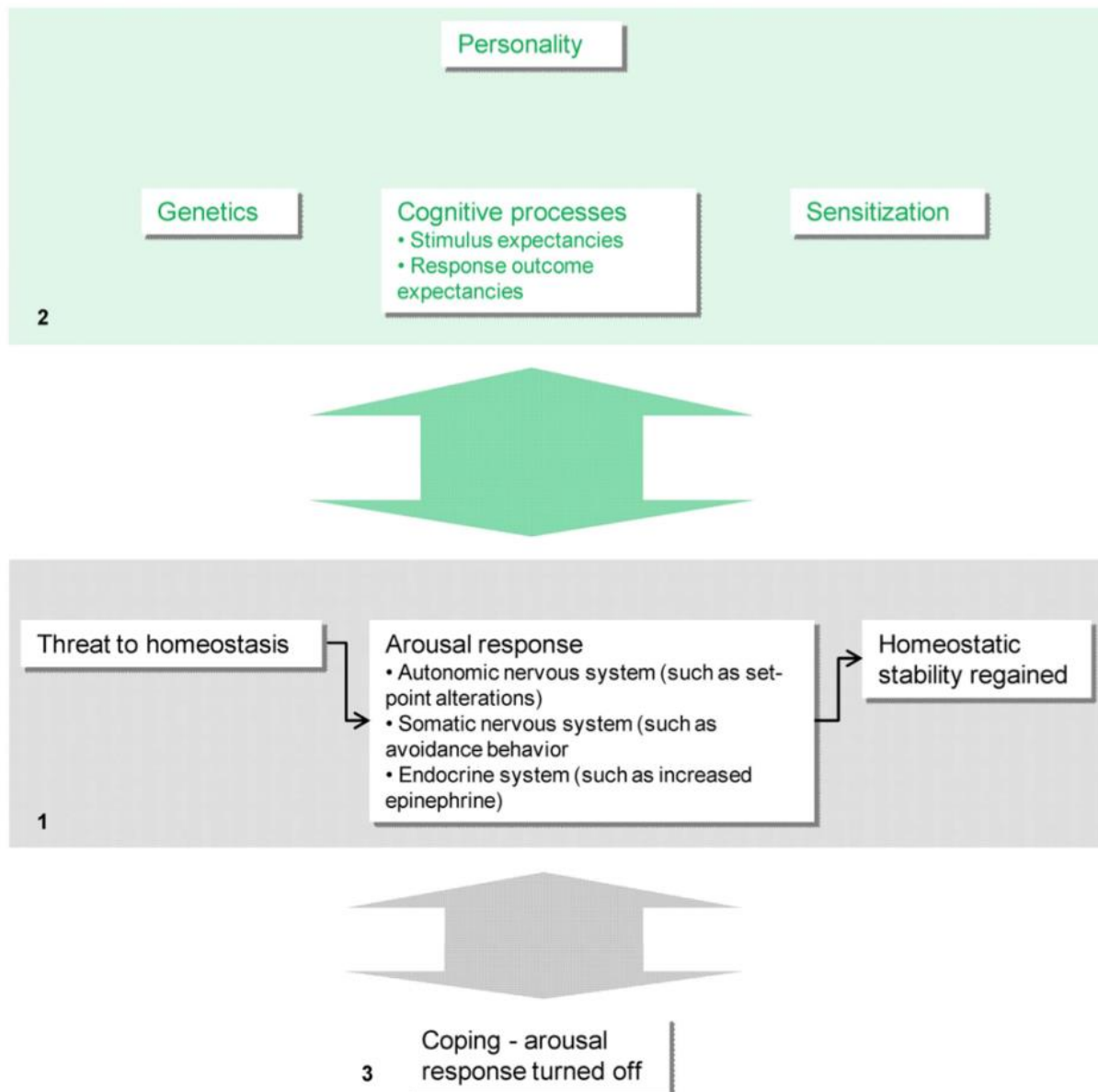


Figure 1

Normal arousal response, according to the Cognitive activation theory of stress (CATS). A threat to homeostasis elicits an arousal response, characterized by nervous and endocrine adjustments aiming at regaining homeostatic stability (1). This compensatory mechanism is mutually connected to cognitive processes; in addition, it is influenced by personality, genetic traits and sensitization (2). If successful, i.e. if homeostasis is restored, the arousal response is turned off (3).

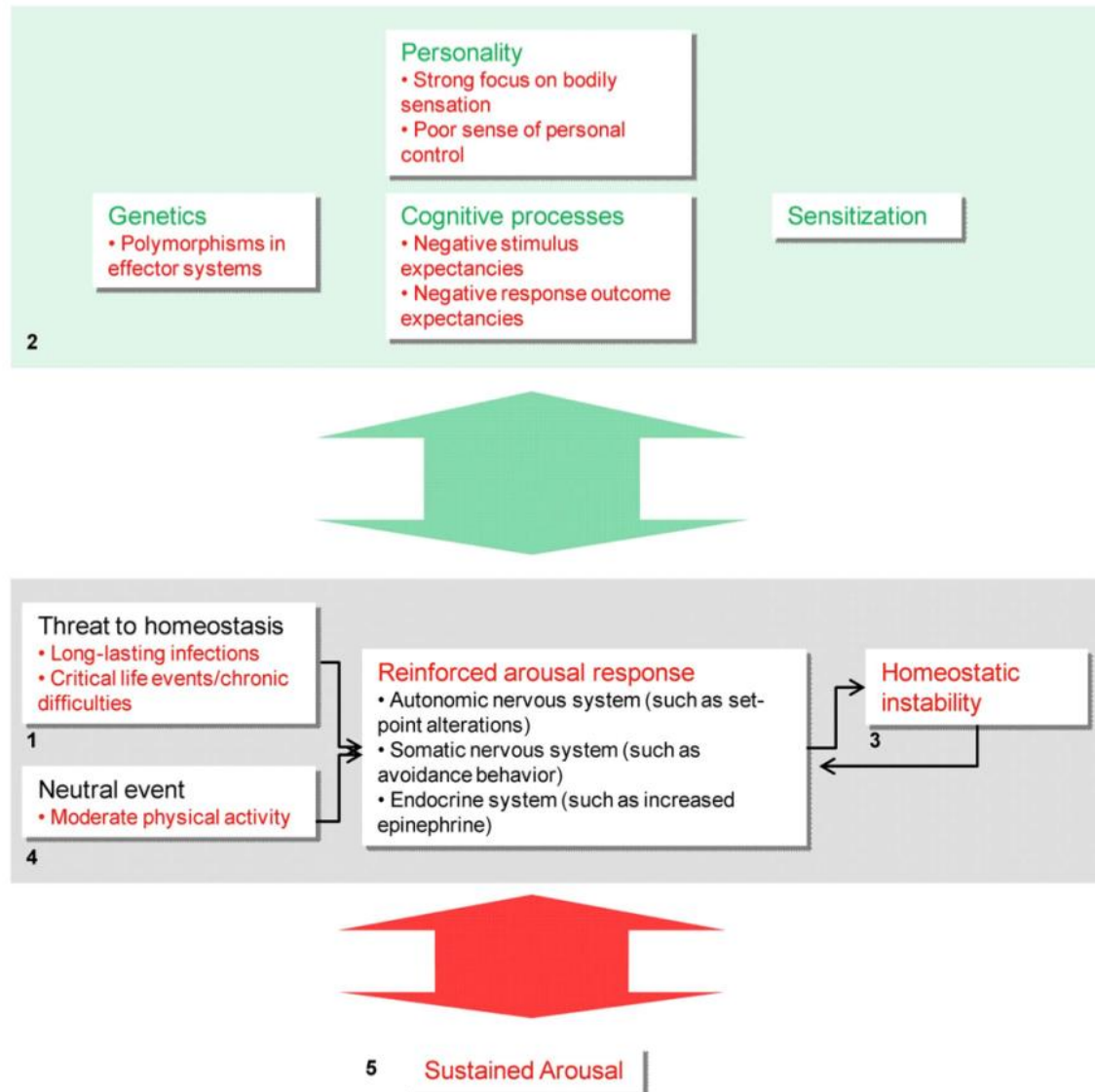


Figure 2

Proposed model of the origin of sustained arousal in Chronic fatigue syndrome. Certain threats to homeostasis, such as long-lasting infections and psychosocial challenges, may elicit a prolonged arousal response, which does not, however, solve the initial problem (1). The mutual relation to cognitive processes results in negative stimulus and response outcome expectancies, creating a vicious circle (2). Certain genetic traits and aspects of personality may reinforce the arousal response further. This situation causes homeostatic instability in itself, establishing another vicious circle (3). In addition, the arousal response may eventually become associated with neutral events, such as moderate physical activity, through the process of classical conditioning (4). We propose that these mechanisms altogether elicit a state of sustained arousal (5).

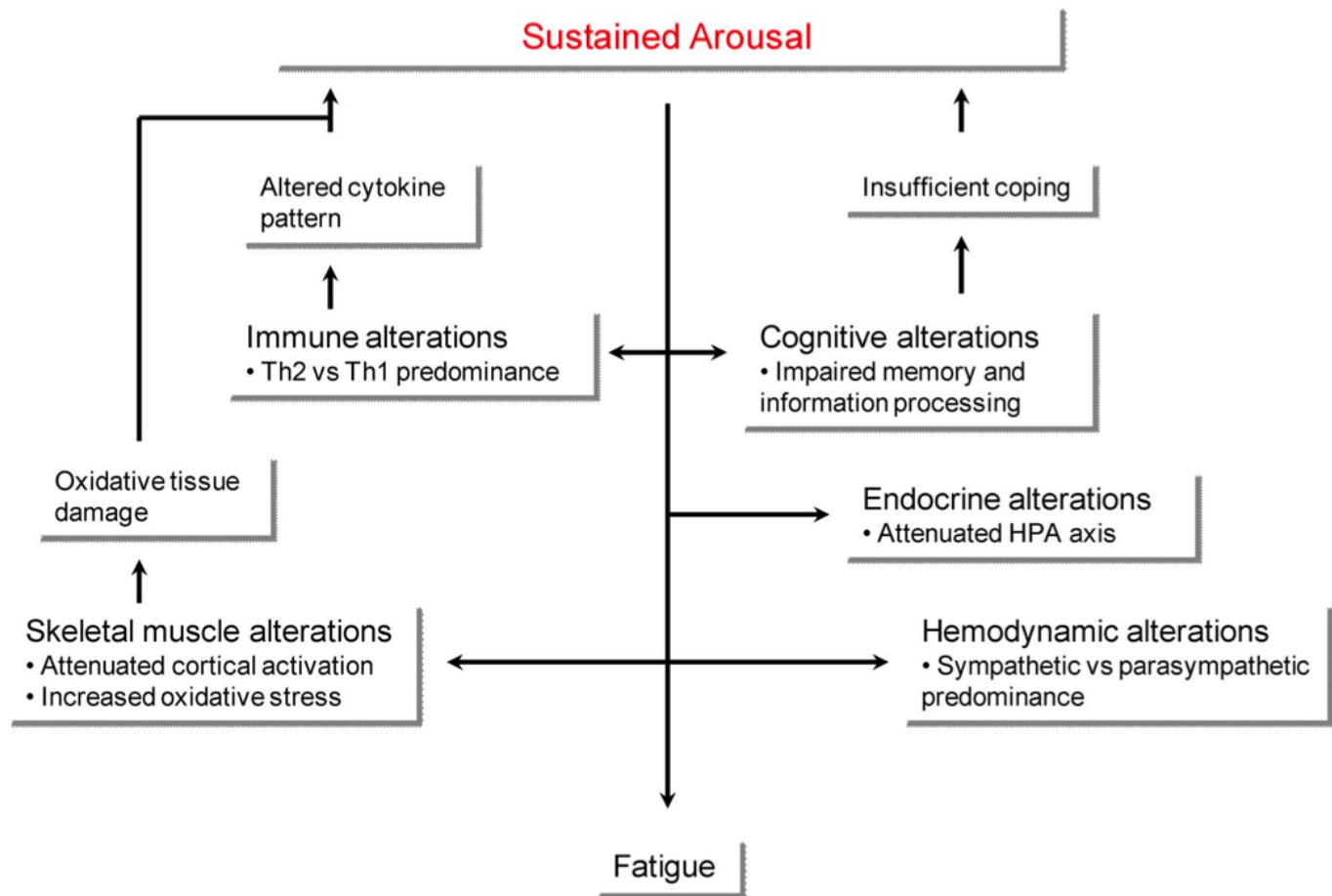


Figure 3

Proposed model on the consequences of sustained arousal in CFS. Sustained arousal may cause alterations of immunity, skeletal muscle, cognitions, endocrine function and hemodynamics. Some of these alterations may in turn establish vicious circles due to altered cytokine pattern, oxidative tissue damage and insufficient coping. Finally, sustained arousal might be directly responsible for the experience of fatigue in these patients.

Limitations of neuroimaging techniques in studying somatoform disorders

- methodological considerations of fMRI itself restrict the interpretation of the findings
- fundamental abnormalities of brain function can be interpreted in at least three different ways:
 - as a cause of the illness;
 - as an effect of the illness;
 - or as a compensation for the illness.

Future challenges

(Browning et al., 2011)

- Etiology:
 - the imaging measure must be testing a hypothesis about a specific process or set of processes whose presence or absence could be invoked to explain the symptoms
- Diagnosis:
 - identify both neural commonalities across apparently disparate conditions and neural distinctions between apparently similar conditions.
- Prediction:
 - Predict responsiveness to treatment

References

- Browning, M., Fletcher, P., & Sharpe, M. (2011). Can neuroimaging help us to understand and classify somatoform disorders? A systematic and critical review. *Psychosom Med*, 73(2), 173-184. doi: 10.1097/PSY.0b013e31820824f6
- Burke, M. J., Ghaffar, O., Staines, W. R., Downar, J., & Feinstein, A. (2014). Functional neuroimaging of conversion disorder: the role of ancillary activation. *Neuroimage Clin*, 6, 333-339. doi: 10.1016/j.nicl.2014.09.016
- Cook, D. B., O'Connor, P. J., Lange, G., & Steffener, J. (2007). Functional neuroimaging correlates of mental fatigue induced by cognition among chronic fatigue syndrome patients and controls. *Neuroimage*, 36(1), 108-122. doi: 10.1016/j.neuroimage.2007.02.033
- Fukuda, K., Straus, S. E., Hickie, I., Sharpe, M. C., Dobbins, J. G., & Komaroff, A. (1994). The chronic fatigue syndrome: a comprehensive approach to its definition and study. International Chronic Fatigue Syndrome Study Group. *Ann Intern Med*, 121(12), 953-959.
- Giesecke, T., Gracely, R. H., Grant, M. A., Nachemson, A., Petzke, F., Williams, D. A., & Clauw, D. J. (2004). Evidence of augmented central pain processing in idiopathic chronic low back pain. *Arthritis Rheum*, 50(2), 613-623. doi: 10.1002/art.20063
- Landa, A., Peterson, B. S., & Fallon, B. A. (2012). Somatoform pain: a developmental theory and translational research review. *Psychosom Med*, 74(7), 717-727. doi: 10.1097/PSY.0b013e3182688e8b
- Stoeter, P., Bauermann, T., Nickel, R., Corluka, L., Gawehn, J., Vucurevic, G., . . . Egle, U. T. (2007). Cerebral activation in patients with somatoform pain disorder exposed to pain and stress: an fMRI study. *Neuroimage*, 36(2), 418-430. doi: 10.1016/j.neuroimage.2007.01.052
- Wyller, V. B., Eriksen, H. R., & Malterud, K. (2009). Can sustained arousal explain the Chronic Fatigue Syndrome? *Behav Brain Funct*, 5, 10. doi: 10.1186/1744-9081-5-10
- Yoshino, A., Okamoto, Y., Yoshimura, S., Shishida, K., Toki, S., Doi, M., . . . Yamawaki, S. (2013). Distinctive neural responses to pain stimuli during induced sadness in patients with somatoform pain disorder: An fMRI study. *Neuroimage Clin*, 2, 782-789. doi: 10.1016/j.nicl.2013.06.001